

# 6R Series

*110–215 Engine Horsepower Tractors*



**JOHN DEERE**



*Ultimate performance.  
Premium comfort.*



# Unrivaled ... Comfort. Power. Convenience.

- *More horsepower for all models*
- *Better visibility in every direction*
- *Longer service intervals maximize uptime*
- *Fuel-conserving Final Tier 4 engines*





**JOHN**



**Livestock chores.  
Material handling.  
Municipal duty.  
Row crops.**

*Built strong. Born ready.  
The new 6R is a premium  
tractor made for users  
facing long days ... and  
impossibly tough chores.*



*Small chassis 6110R – 6130R*

*Mid chassis 6145R – 6155R*

*Large chassis 6175R – 6215R*

**CONTENTS**

- Introduction .....4-5
- ComfortView™ Cab ..... 6-7
- PowerTech™ Engines ..... 8-9
- Transmission Options .....10-11
- Hydraulics / Hitch / PTO .....12-13
- GreenStar™ | AutoTrac™ ..... 14-15
- R Series Loaders..... 16-17
- 6110R - 6130R ..... 18-21
- 6145R - 6155R ..... 22-25
- 6175R - 6215R .....26-29
- Frontier Equipment.....30-31
- PowerGard™ .....32
- Attachments .....33-35





*When the going gets tough, the 6R is ready to go. No matter what your to-do list looks like – or what Mother Nature throws your way – you'll be up for it.*

Moving heavy silage bales, cleaning dirty stalls, pulling a loaded planter or drill, loading thousands of pounds of feed into a mixer, mowing with a large flex-wing mower, or transporting heavy implements ... the 6R was made to handle it.

*Here's proof.*

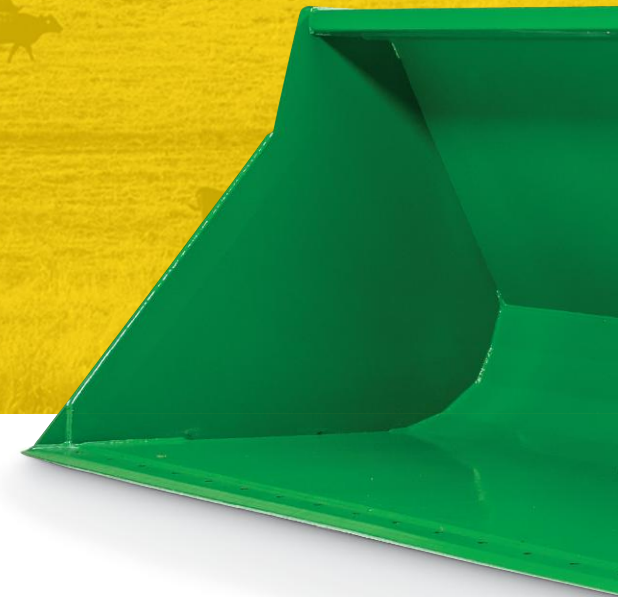
Up to 41 gpm of hydraulic punch. A chore-mastering hitch-lift capacity of up to 12,213 pounds (5,443 kg). Tackle changing conditions with a power reserve that boosts power by up to 40 extra horses. Three frame sizes. And models from 110 to 215 horsepower.

For high-hour users who need to take big days head on, the 6R wraps you in comfort and helps you take command.

## *Ready, willing and able*

*The 6R is built strong to stand up to the toughest tests you've got ... without testing your resolve.*

**For down-and-dirty livestock and material handling chores,** 6R Series Tractors are built to handle the toughest jobs, with a level of comfort and convenience you have to experience to believe.









Wrap yourself in corner office comfort

*Take command of your world with the ComfortView cab.*

The 6R is built for high-hour users who face some of the harshest weather and working conditions there are. So we've designed a cab that helps you stay on top of everything...comfortably. Welcome to the creature comforts of the 6R ComfortView cab.

*Visibility*

Slim corner posts, panorama roof and doors, lower rear fenders, redesigned hydraulic stack, and 30-degree right-hand seat swivel for maximum rear visibility (with CommandARM equipped cabs)

*Functionality*

User-friendly controls and features like tilt and telescoping steering wheel, self-canceling turn signal, adjustable air seat and automotive style gauges keep you in the right position

*Now you're in control. The CommandCenter™ is a performance monitor that helps control tractor functions and compatible implements for improved efficiency and automation.*





## CommandPRO™

*The future of tractor operation is now.*

*Introducing CommandPRO. Experience seamless control of your tractor and implements all in the palm of your hand. Enjoy zero to top speeds with a simple push or pull, eleven customizable buttons to match the job, options to configure various set speeds, and inching ability to keep you in command of your operation like never before.\**



*\*CommandPRO is compatible with IVT transmissions.*

### *Turn the comfort up even more*

If you want to crank the comfort level of your 6R up a few more notches, the optional Hydraulic Cab Suspension Plus – with adjustable settings using the CommandCenter™ – automatically levels with load changes and braking forces for a smooth ride in every application.



## 6R powerTech engines

*Reliability, all-condition performance, and fluid economy ... that's why every 6R features a John Deere PowerTech™ engine.*

With a PowerTech 4.5 or 6.8 liter engine under the hood, you'll have smart features such as common rail fuel injection and variable geometry turbochargers that provide nearly instant throttle response. Combine that with the engine control unit that checks power demands 100 times a second – and adjusts automatically to match changing needs – and you'll put productivity right where it belongs ... front and center. Engines in all 6R Tractors are Final Tier 4 compliant and have been designed to deliver clean, consistent power while conserving fuel and diesel exhaust fluid (DEF). They also feature an Intelligent Power Management system for a boost of up to 40 horsepower so you can power through changing conditions.

*When we say,  
Nothing runs like a Deere™,  
we mean it.*

Integrated approach to Final Tier 4 compliance gives the engine power, torque, efficiency, and responsiveness, rather than just emissions compliance alone.

*New PowerTech™ engines put  
productivity in the driver's seat*

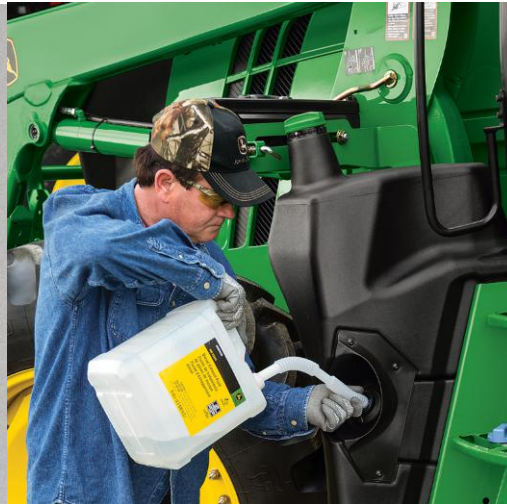






*Get it done and go*

Whether you're in the field, moving from one place to the next or checking the fluids, the 6R is all about uptime.



The oil change interval is 750 hours on six-cylinder 6R engines instead of 500.

The latch on the tilt-up hood makes regular checks quick and simple.

The engine oil service door on the hood allows quick and easy access to the dipstick to check oil levels. No more struggling to open your tractor hood when a front loader and hood guard are attached.



*Access to important service points are easy to get to so you can do daily checks quickly, get on the job and maximize productivity.*



*A tractor this versatile needs  
a transmission to match.*

The 6R comes standard with the AutoQuad™ PLUS transmission. You get four power-shiftable gears in each range. Or for even more fine-tuning, look into the Direct Drive™, which offers convenience controls like our Infinitely Variable Transmission™ (IVT) with the economy and efficiency of an all-mechanical transmission. Of course, for the ultimate in control, nothing compares to the John Deere IVT. Just dial in a specific ground speed and the engine will work with the transmission to keep you on target no matter what the application. And with an overdrive, the IVT transmission will help you achieve higher transport speeds at lower RPMs, improving fluid economy.

With five different transmission choices available on the 6R, you can always find the right gear for the job. Each comes with a left-hand reverser for work that requires no-clutch, controlled forward and reverse movements.

*Shift your day into high gear*



***Want higher speeds, better economy, and easier operation?***

*For all around versatility, nothing beats the standard AutoQuad PLUS. But if you are spending a lot of time in transport, the 31 mph (50 km/h) option could be exactly what you need\*. It's available on the AutoQuad PLUS and IVT transmissions.*

\*Requires the installation of front and rear fenders as well as Triple Link Suspension™ (TLS) front axle with brakes.

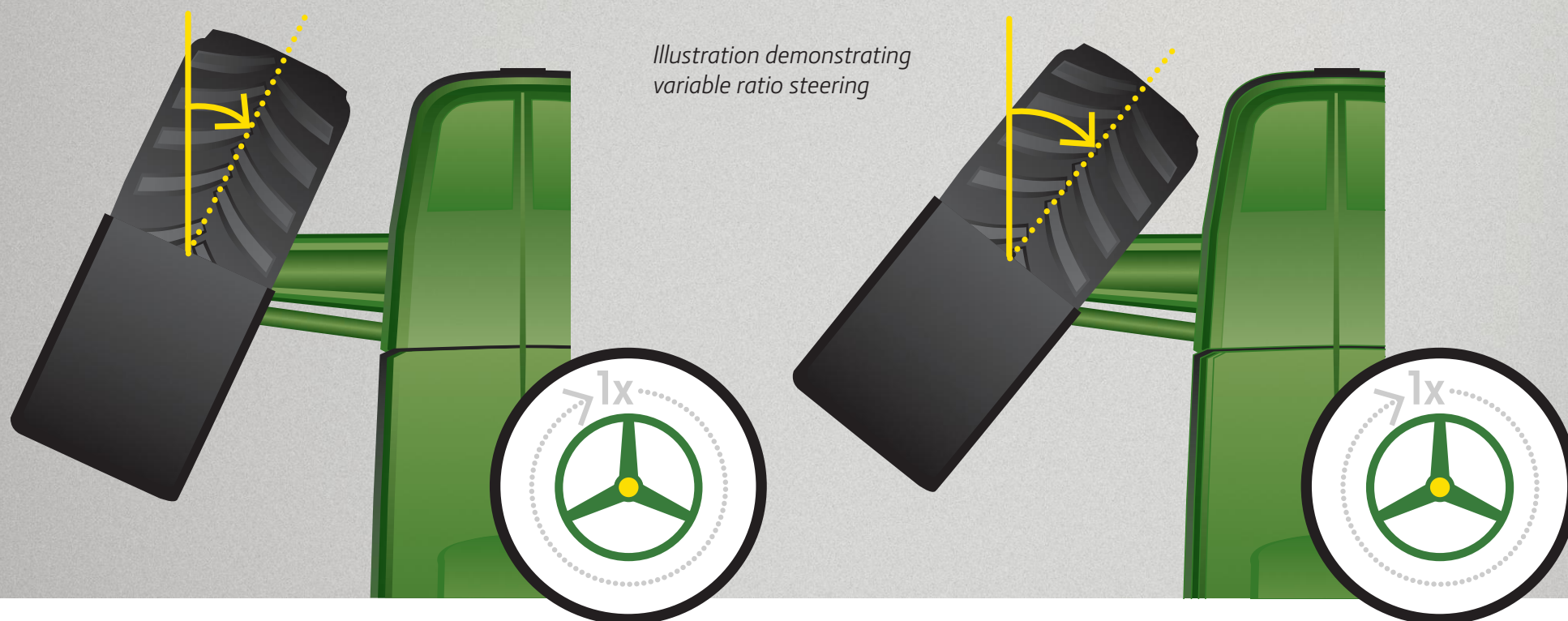


## Quite the revolution.

When you're logging long hours, everything can start to take its toll, including steering movements associated with loader work. Go further, faster, and with less effort with Variable Ratio Steering.

Available as an option on all 6R model tractors, variable ratio steering requires fewer revolutions of the steering wheel to complete a turn\*. This time-saving feature is only active while your ground speed is 9 mph or less, and is easily enabled/disabled from your display.

It's small changes like this can add up to big savings of your time and effort.



Variable Ratio Steering Off

Variable Ratio Steering On

\*Variable Ratio Steering does not affect turning radius.



## 6R Hydraulics & PTO

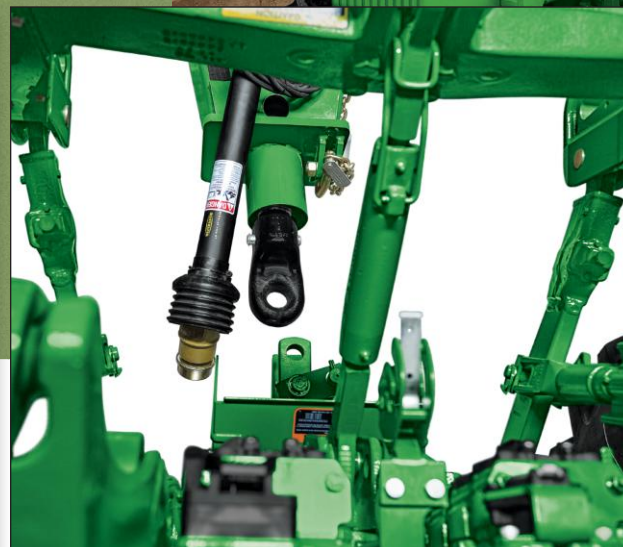
*Need the muscle for fast cycle times and lifting big implements?*

With the 6R, it's all yours.

Get up to 12,213 pounds (5,438 kg) of lift capacity and hydraulic flow up to 41 gpm (155 lpm) so you can get big jobs done ... faster.

When you're not using all that power, the pressure- and-flow compensated hydraulic system is designed to conserve energy.

To smooth out those hard days, the 3-point hitch features electronic load sensing for varied load conditions and hitch dampening for improved ride stability.



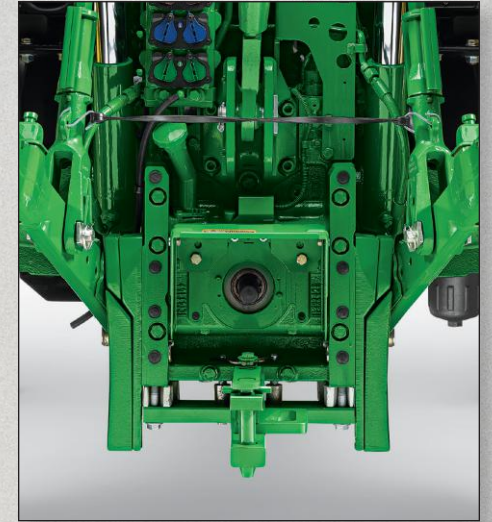
*Power up. Take command.*

*New hydraulic stack with up to 6 SCVs or 5 SCVs with Power Beyond ... has been repositioned further up and in to improve hitch visibility without limiting accessibility.*



***Versatility is part of the 6R package***

*An independent, dual-speed PTO is standard equipment on all 6R tractors. A power-assisted three-speed shifttable PTO is also available to enhance efficiency and boost performance. Whatever the chore, you'll have what you need for power-hungry implements.*



***PTO choices to match your chores***

*Choose from 540/540E/1000 rpm or 540E/1000/1000E rpm. The economy mode lets you reduce engine rpm while maintaining rated PTO speed, which helps conserve fuel.*



With John Deere Ag Management Solutions (AMS), you'll have help reducing input costs and increasing efficiency.

With optional GreenStar™ and AutoTrac™, the 6R can fully utilize all AMS hardware and software applications for documentation, automated functions, and equipment management. Factory installation is available to make the step into this powerful technology simple.

No matter where, how or when you use GreenStar precision, you'll be using technology to outpace your challenges, stay competitive, and have an impact on your bottom line.

***Work smarter with new Generation 4 CommandCenter™ Display***

*Go for the IVT or DirectDrive transmission and get the 8.4-inch CommandCenter™ touchscreen display.*

*Then easily program and monitor many tractor functions as well as compatible implements. You can also run a variety of precision software applications for tractor control and mapping, including AutoTrac.*



*Ready for precision*



### *Your smart tractor has arrived.*

With the addition of JDLink™ access plus the Generation 4 4200 CommandCenter™ display, your tractor is outfitted from the inside out to help you save time and make better decisions to serve your operation.

You need a high-performing processing system to keep up with the endless amount of data you now have access to. The Generation 4 4200 CommandCenter processor and display is the answer. With a 20% larger interface, you get more surface area for viewing tractor and precision ag functions. And with AutoTrac activation, you'll get the addition of field documentation.



With JDLink installed, the possibilities seem truly endless:

- Track your machine location and hours, as well as analyze machine and fuel usage.
- Send setup, prescription and documentation files to a machine in the field through Wireless Data Transfer.
- Set geofencing, curfew alerts, and maintenance tracking, and develop preventative maintenance plans.
- Take advantage of the complimentary 5-year subscription to Remote Display Access™ plus an upgrade to Connect for one year for virtual access to your machine, allowing you to advise your operators immediately of adjustments that will help them maximize efficiencies – and your profitability.
- Utilize Service ADVISOR™ Remote and allow your dealer to remotely access your machine – it's like having your own personal technician right by your side in the field.

Increased uptime through proactive diagnostics. Timely, easily accessible information for better decision-making. Less trips to the field to save you time. All of this is possible with JDLink.

***Automate your day:*** Using John Deere AMS technology and all the automation features available on the 6R -- like the CommandCenter -- you can fine-tune your approach for maximum efficiency.



# Take on big jobs

*When you put an R Series Loader on a John Deere 6R, you've got a winning team built to load ... and built to last.*

Not only will both R Series Loaders integrate perfectly with the 6R, the low torque tube, concealed hydraulic lines and attachment carrier give you good visibility and make it easy to switch attachments. And with the integrated parking stands and remote bucket detach, you'll have easy, tool-free removal and attachment. Exclusive green-on-green compatibility and performance will help you get the job done right.



It's easy to shift from forward to reverse, thanks to the left-hand reverser. It helps boost productivity when you're doing loader work.



Here's where you get the precise loader control you need – the perfectly integrated electronic three-function joystick (optional) is ergonomically designed for increased productivity.



The global carrier makes hooking up to any compatible loader attachment tool-free, quick and easy with our Automatic Implement Latch built in standard on the Global Carrier.

Order the optional panorama roof for exceptional visibility to a raised loader.

**Automate your day** If your day involves a lot of repetitive loader work like loading trucks, moving pallets, or stacking bales, you'll love the new Return-To-Position option available for 6R tractors with R Series loader models. With the ability to set 2 boom and 2 bucket positions, your fork, bucket, or spear will return to the same position, every time. Also, the Electronic Self Leveling option will convert an NSL loader into a self leveling loader for superior visibility or install it on a MSL loader for improved leveling accuracy while maintaining unmatched capacity. And to improve operator comfort, the loader suspension system reduces the shock of transporting loads across rough terrain.



*John Deere Loaders –  
built to load, built to last.*

*False rod bucket cylinders require a smaller displacement of oil on the head end of the cylinder allowing the cylinder to dump faster than a normal cylinder. The result? Faster bucket cycle times. (False rod bucket cylinders are only available on Mechanical Self-Leveling configurations.)*

*Cast steel components add strength and durability.*

*Convenient single-point hydraulic connections save time while eliminating connection error with virtually no oil loss. Plus, electrical connections are integrated in the single-point connection.*

*Concealed oil lines, routed through the boom arm and torque tube, protect the hydraulic system and give the loader a more attractive appearance.*

## LOADER AND TRACTOR COMPATIBILITY

Model #	Tractor Compatibility	Leveling Options
620R	6110R - 6130R	NSL or MSL
640R	6110R - 6155R	NSL or MSL
660R	6145R   6155R   6175R - 6215R	NSL or MSL
680R	6175R - 6215R	NSL or MSL



*The 110 to 130 engine horsepower 6R Series are the smallest of the 6R Tractors but offer all the same comfort, convenience and productivity – enhancing features you'll find on the bigger models.*

The ComfortView cab, the multiple transmission choices, even the CommandCenter that lets you connect, control and monitor implements and tractor functions.

If you've got tight spaces to work in and need a nimble tractor that can still bring the hammer down on tough chores, the small-frame 6R is a game changer.

Start with the hitch-lift capacity up to 8,400 pounds (3,810 kg) and 30 gpm (114 lpm) of closed-center, pressure-and-flow compensated hydraulic power. That means you can handle heavy bales and big rotary cutters with ease. You won't have to worry about changing conditions either ... the small-frame 6R has a power reserve of 20 extra horses to help you power through differing conditions. And with PTO muscle of up to 101 horsepower, you'll keep power-hungry rear implements running smoothly.





## *Small ... but still mighty*

*The small-chassis 6R is an agile machine that doesn't skimp on performance or creature comforts.*



*Small-chassis 6R Series Tractors have the same interior styling and features of larger John Deere tractors.*



6110R | 6120R | 6130R Series Specifications





	6110R	6120R	6130R
<b>POWER* estimated</b>			
Rated PTO power (hp SAE) at rated engine speed (2100 erpm)	86 hp (64.1 kW)	94 hp (70 kW)	101 hp (75 kW)
Rated Engine power hp (hp ISO) at 2100 engine rpm (97/68EC)*	110 hp (82 kW)	120 hp (85.8 kW)	130 hp (93.2 kW)
Max Engine power hp (hp ISO) at 1900 engine rpm (97/68EC)*	119 hp (89 kW)	130 hp (97 kW)	141 hp (105 kW)
Intelligent Power Management	20 Additional Engine Horsepower (hp ISO) at 2,100 rpm (rated speed)		
<b>ENGINE</b>			
Manufacturer (US EPA Interim Tier4/EU Stage IIIb)	John Deere PowerTech™ PSS (B20 Diesel Compatible)		
Type	Diesel, in-line, 4-cylinder, wet-sleeve cylinder liners with 4 valves-in-head		
Aspiration (US EPA Interim Tier4/EU Stage IIIb)	Dual Series Turbocharger w/fixed geometry first stage-variable geometry second stage - air-to-air aftercooling and cooled exhaust gas recirculation		
Filter, engine air	Dual stage with engine cooling fan aspiration		
Displacement	275 cu. in. (4.5L)		
<b>TRANSMISSION</b>			
16 Speed PowerQuad PLUS™ Transmission	Option (Deduct)		
24 Speed AutoQuad PLUS™ ECO Transmission 40K	Standard		
24 Speed AutoQuad PLUS™ ECO Transmission 50K	Option		
John Deere Infinitely Variable Transmission (IVT) 0.030-26 mph (0.050-42 km/h)	Option		
John Deere Infinitely Variable Transmission (IVT) 0.030-31 mph (0.050-50 km/h)	Option		
<b>ELECTRICAL SYSTEM</b>			
Alternator/Battery	14V, 200 amps (14V, 240 amp Optional)/12V		
Total cold cranking amps	154Ah battery SAE 1200A@0F		
<b>REAR AXLE AND WHEEL EQUIPMENT</b>			
Inboard planetary three pinion			
Flanged: 2 Position Steel Wheels	Option		
Flanged: 8 Position Steel Wheels	Standard		
79.45 x 2555 mm diameter (3.1 x 100.6 in.): 2 Position Steel Wheels	Option		
79.45 x 2555 mm diameter (3.1 x 100.6 in.): 2 Position Cast Wheels	Option		
<b>FRONT AXLES</b>			
2WD – tread range 60 to 88 in. (1,524 to 2,235 mm)	2WD deduct option		
MFWD – tread range 60 to 88 in. (1,524 to 2,235 mm)	MFWD standard		
TLS – tread range 60 to 88 in. (1,524 to 2,235 mm)	Optional		
TLS with front brakes, available with 40 k/mh, standard with 50 k/mh	Optional		
<b>STEERING</b>			
Hydrostatic Power	(Standard) - Load Sensing, Hydrostatic, Flow Metering with a 406mm diameter steering wheel		
<b>HYDRAULIC SYSTEM (type)</b>			
Closed-center, pressure/flow compensated			
Selective control valves	3-450 Series mechanical SCVs standard/3-5 E/H SCVs optional		
Axial piston (displacement)	45cc		
Maximum pressure	2,900 psi (20,000 kPa)		
Rated flow	30 US gpm/114 lpm		
Available flow at a single SCV	26.4 U.S. gpm/100 lpm		
<b>3-POINT HITCH (rear) - Electrohydraulic Sensing</b>			
Category 2/3N -- standard	5582 lb (2532 kg)	5,582 lb (2,532 kg)	6,475 lb (2,937 kg)
Category 2/3N -- option	7432 lb (3371 kg)	7,432 lb (3,371 kg)	8,457 lb (3,836 kg)
<b>DRAWBAR</b>			
Cat 2 1,400 kg (3,085 lb.) - 2,450 kg (5,400 lb.) Maximum Vertical Load dependent on drawbar position	Standard		
<b>PTO (POWER TAKE OFF)</b>			
Independent			
1-3/8 in., 540/1000 reversible shaft	Standard		
1-3/8 in 540/540E/1000 reversible shaft	Optional		
<b>CAPACITIES</b>			
Fuel Tank	195L (51.5 US gal)		
DEF Tank capacity	13L (3.4 US gal)		
<b>WHEELBASE</b>			
2WD	102.5 in. (2,580 mm)		
MFWD / TLS	102.5 in. (2,580 mm)		
<b>AVERAGE STANDARD WEIGHT less front weights</b>			
6110R, AQD, MFWD, 320/85R24, 420/85R30, loader rdy, front weight bracket ½ fuel	12,059 lbs (5,470 kg)		
Max Permissible Weight	19731 lb (8950 kg)	21936 lb (9950 kg)	21936 lb (9950 kg)

Nominal data is metric. Standard data is converted from metric data. Use metric for all calculations US EPA Interim Tier4/EU Stage IIIb Tractor power and specifications Manufacturers Estimates

\* 97/68/EC power refers to average (50% MOE) net brake power measured and corrected for ambient conditions according to the EC emissions directive. It is equivalent to internal Deere Standard RES10080, and SAE Standards J1349, J1995.



*The 145 and 155 engine horsepower 6R Series are mid-size tractors ready for the demands of growing beef and dairy operations, large municipalities with a long list of big jobs, and tough utility chores like hauling grain, pulling drills or heavy-duty loader work.*

Just like every 6R Series Tractors, you get big-time comfort ... and the next level of performance.

Big implements? No problem. With a hitch lift capacity of up to 9,193 pounds (4,170 kg), you're ready to go. Dense bales, tons of silage to move, or a mountain of gravel to lift or seed boxes to move? Get it done with up to 41 gpm (155 lpm) of closed-center, pressure-and-flow compensated hydraulic power at your fingertips. And changing conditions won't change your mind about how capable the mid-frame 6R is either. With 40 additional reserve horsepower ready to jump in when you need it most, you'll muscle through as power demands change. You'll also have up to 121 PTO horsepower on tap to keep you productive, no matter what implement you're running.





## *Medium size ... not medium performance*

*Small enough to get around but big enough on comfort and performance to help you master the tough stuff.*



*The medium-chassis 6R brings a bigger level of power to the game but is nimble enough to handle livestock chores in tighter work areas.*



6145R | 6155R Series Specifications





	6145R	6155R
<b>POWER * estimated</b>		
Rated PTO power (hp SAE) at rated engine speed (2100 erpm)	111 hp (83 kW)	121 hp (90 kW)
Rated Engine power hp (hp ISO) at 2100 engine rpm (97/68EC)*	145 hp (103 kW)	155 hp (110 kW)
(Standard) Max Engine power hp (hp ISO) at 1900 engine rpm (97/68EC)*	157 hp (113 kW)	168 hp (121 kW)
Intelligent Power Management	40 Additional Engine Horsepower (hp ISO) at 2,100 RPM (rated speed)	
<b>ENGINE</b>		
Manufacturer (US EPA Interim Tier4/EU Stage IIb)	John Deere PowerTech™ PVS (B20 Diesel Compatible)	
Rated Speed	2,100 rpm	
Aspiration (US EPA Interim Tier4/EU Stage IIb)	Single variable geometry turbocharger with air-to-air aftercooling and cooled exhaust gas recirculation	
Filter, engine air	Dual stage with engine cooling fan aspiration	
Displacement	415 cu. In. (6.8L)	
<b>TRANSMISSION</b>		
16 Speed PowerQuad PLUS™ Transmission	Option (Deduct)	
20 Speed AutoQuad PLUS™ ECO Transmission 40K	Standard	
AutoQuad PLUS (31 mph/50 kmh) 20F/20R	Option	
DirectDrive ECO Transmission (25 mph/40 kmh) 24F/24R	Option	
John Deere Infinitely Variable Transmission (IVT) 0.030-26 mph (0.050-42 km/h)	Option	
John Deere Infinitely Variable Transmission (IVT) 0.030- 31 mph (0.050-50 km/h)	Option	
<b>ELECTRICAL SYSTEM</b>		
Alternator/Battery	14V, 200 amps (14V, 240 amp Optional)/12V	
Total cold cranking amps	154Ah battery SAE 1200A@0F	
<b>REAR AXLE AND WHEEL EQUIPMENT</b>		
Inboard planetary three pinion		
92 x 2550 mm diameter (3.62 x 100.4 in.)	Standard	
92 x 2808 mm diameter (3.62 x 110.5 in.)	Option	
Flange	Option	N/A
High-Crop	N/A	Option
<b>FRONT AXLES</b>		
2WD – tread range 60 to 88 in. (1,524 to 2,235 mm)	Optional	
MFWD - tread range 60 to 88 in. (1,524 to 2,235 mm)	Standard	
TLS - tread range 60 to 88 in. (1,524 to 2,235 mm)	Optional	
TLS with front brakes, available with 40Kph, required with 50Kph	Optional	
<b>STEERING</b>		
Hydrostatic Power	(Standard) - Load Sensing, Hydrostatic, Flow Metering with a 406 mm diameter steering wheel	
<b>HYDRAULIC SYSTEM (type)</b>		
Closed-center, pressure/flow compensated		
Selective control valves	3-450 Series Mechanical SCVs Standard, 3-6 E/H SCV's Optional	
Axial piston (displacement)	45cc	
Maximum pressure	2,900 psi (20,000 kPa)	
Rated flow	30 US gpm/114 lpm (Optional 41 gpm/155 lpm)	
Available flow at a single SCV	26.4 U.S. gpm/100 lpm	
<b>3-POINT HITCH (rear) - Electrohydraulic Sensing</b>		
Category 3/3N	9,193 lb. (4,170 kg)	9,193 lb. (4,170 kg)
<b>DRAWBAR</b>		
Cat 2 1400 kg (3,085 lb.) - 2,450 kg (5,400 lb.) Maximum Vertical Load dependent on drawbar position	Standard	
<b>PTO (POWER TAKE OFF)</b>		
1-3/8 in., 540/1000 reversible shaft	Standard	
1-3/8 in 540/540E/1000 reversible shaft	Optional	
<b>CAPACITIES</b>		
Fuel Tank	270L (71.3 U.S. gal)	
DEF Tank capacity	16L (4.2 U.S. gal)	
<b>WHEELBASE</b>		
2WD	117.5 in. (2985 mm)	
MFWD	108.8 in. (2765 mm)	
<b>AVERAGE STANDARD WEIGHT less front weights</b>		
6145R, AQD, MFWD, 380/85R30, 480/80R42, loader rdy, front weight bracket ½ fuel	17,028 lbs (7,724 kg)	
Max Permissible Weight	24,802 lbs (11,250 kg)	25,902 lbs (11,750 kg)

Nominal data is metric. Standard data is converted from metric data. Use metric for all calculations. US EPA Interim Tier4/EU Stage IIb Tractor power and specifications. Manufacturers Estimates

\* 97/68/EC power refers to average (50% MOE) net brake power measured and corrected for ambient conditions according to the EC emissions directive. It is equivalent to internal Deere Standard RES10080, and SAE Standards J1349, J1995.



*The 175 to 215 engine horsepower 6R Series are large-chassis tractors with the heavy-duty muscle made to match their broad shoulders.*

*Heavy tillage tools, loaded planters and cycling an R Series loader over and over are all in a day's work for the large-frame 6R.*

Consider the numbers.

Big implements are easy to handle with 12,213 pounds (5,443 kg) of hitch lift capacity at the ready. And cycling big loads are faster with 41 gpm (155 lpm) of closed-center, pressure-and-flow compensated hydraulic power. You can keep big implements running smoothly when connected to up to 175 horsepower of PTO muscle. And with 40 horsepower waiting in reserve, you'll cruise through changing field conditions and different applications without a hitch.

## *Work with authority*

*The large-chassis 6R won't hesitate when it comes to handling tough tillage and planting duties.*

*Heavy hitter: bring big power and big performance to your utility, row crop, and livestock work with the large-chassis 6R.*







6175R | 6195R | 6215R Series Specifications





	6175R	6195R	6215R
<b>POWER * estimated</b>			
Rated PTO power (hp SAE) at rated engine speed (2,100 erpm)	142 hp (106 kW)	159 hp (118 kW)	177 hp (132 kW)
Rated Engine power hp (hp ISO) at 2100 engine rpm (97/68EC)*	175 hp (129 kW)	195 hp (143 kW)	215 hp (158 kW)
Max Engine power hp (hp ISO) at 1900 engine rpm (97/68EC)*	190 hp (142kW)	212 hp (158kW)	233 hp (174 kW)
Intelligent Power Management	40 Additional Engine Horsepower (hp ISO) at 2,100 RPM (rated speed)		
<b>ENGINE</b>			
Diesel, in-line, 6-cylinder, wet-sleeve cylinder liners with 4 valves-in-head			
Manufacturer	John Deere PowerTech™ PVS	John Deere PowerTech™ PSS	
Aspiration (US EPA Interim Tier4/EU Stage IIIb)	Single variable geometry turbocharger with air-to-air aftercooling and cooled exhaust gas recirculation	Dual Series Turbocharger w/fixed geometry first stage-variable geometry second stage - air-to-air aftercooling and cooled exhaust gas recirculation	
Filter, engine air	Dual stage with engine cooling fan aspiration		
Displacement	415 cu. in. (6.8L)		
<b>TRANSMISSION</b>			
16 Speed PowerQuad PLUS™ Transmission 19 mph (30K)	Optional (Deduct)		
20 Speed AutoQuad PLUS™ ECO Transmission 26 mph (40K)	Standard		
20 Speed AutoQuad PLUS™ ECO Transmission 31 mph (50K)	Optional		
John Deere Infinitely Variable Transmission™ (IVT) 0.050-42 km/h (0.030-26 mph)	Optional		
John Deere Infinitely Variable Transmission (IVT) 0.050-50 km/h (0.030-31 mph)	Optional		
John Deere Direct Drive™ Transmission 24F/24R 2.6-40 km/h (1.6-25 mph)	Optional		
<b>ELECTRICAL SYSTEM</b>			
Alternator/Battery	14V, 200 amps (14V, 240 amp Optional)/12V		
Total cold cranking amps	154Ah battery SAE 1200A@0F		
<b>REAR AXLES AND WHEEL EQUIPMENT</b>			
100 x 2,550 mm diameter (3.94 x 100.4 in.)	Standard		
100 x 2,808 mm diameter (3.94 x 110.5 in.)	Optional		
100 x 3,012 mm diameter (3.94 x 118.5 in.)	Optional		
Rear axle final drives	Inboard planetary three pinion		
Rear wheel equipment	Group 47/48 tires available as singles/duals		
<b>FRONT AXLES</b>			
MFWD - tread range 60 to 88 in. (1,524 to 2,235 mm)	Standard		
TLS - tread range 60 to 88 in. (1,524 to 2,235 mm)	Optional		
TLS with front brakes, available with 40K, required with 50K	Optional		
<b>HYDRAULIC SYSTEM</b>			
Closed-center, pressure/flow compensated			
Selective control valves	3-450 Series Mechanical SCVs Standard, 3-6 E/H SCVs Optional		
Axial piston (displacement)	60cc		
Maximum pressure	2,900 psi (20,000 kPa)		
Rated flow	41 US gpm/155 lpm		
Available flow at a single SCV	26.4 U.S. gpm/100 lpm		
Take out oil capacity	71 gal (27 liters)		
<b>3-POINT HITCH (rear) - Electrohydraulic Sensing</b>			
Category 3/3N	10,697 lb. (4,852 kg)	12,213 lb. (5,540 kg)	
<b>DRAWBAR</b>			
Cat 2 1,400 kg (3,085 lb.) - 2,450 kg (5,400 lb.) Maximum Vertical Load dependent on drawbar position	Standard	NA	
Cat 3 1,600 kg (3,525 lb.) - 2,800 kg (6,170 lb.) Maximum Vertical Load dependent on drawbar position	NA	Standard	
<b>PTO</b>			
540/1000 PTO rpm @ 1,932 engine rpm, 540E/1000E PTO rpm @ 1785 engine rpm			
1-3/8 in. (38.10 mm), 540/1000 reversible shaft	Standard	Standard	Standard
1-3/4-in. (44.45 mm), 540/1000 reversible shaft	NA	Optional	
1-3/8 in. (38.10 mm) 540/540E/1000 reversible shaft	Optional	Optional	
1-3/4 in. (44.45 mm), 540/540E/1000 reversible shaft	NA	Optional	
1-3/8 in. (38.10 mm) 540E/1000/1000E reversible shaft	Optional	Optional	
1-3/4 in. (44.45 mm), 540E/1000/1000E reversible shaft	NA	Optional	
<b>CAPACITIES</b>			
Fuel Tank Capacity	88.5 US gal. (335L)		
DEF Tank Capacity	5.3 US gal (20L)		
<b>WHEELBASE</b>			
MFWD / TLS	110.2 in. (2800 mm)		
MFWD / TLS axle clearance under axle differential housing w/ 420/90R30	21.1 in. (537 mm)	20.2 in. (512 mm)	
MFWD / TLS axle clearance off-center axle w/ 420/90R30	23.5 in. (597 mm)	23.9 in. (607 mm)	
<b>AVERAGE STANDARD WEIGHT (less weights)</b>			
6175R, IVT, MFWD, 420/90R30, 480/80R46, loader rdy, front weight bracket ½ fuel	19,610 lbs (8895 kg)		
Max Ballast Level	Maximum recommended ballast is 163 lbs./SAE PTO HP (see operator's manual for specific ballast instructions)		
Max Permissible Weight	27,998 lbs (12,700 kg)	29,652 lbs (13,450 kg)	

Nominal data is metric. Standard data is converted from metric data. Use metric for all calculations

\* 97/68/EC power refers to average (50% MOE) net brake power measured and corrected for ambient conditions according to the EC emissions directive. It is equivalent to internal Deere Standard RES10080, and SAE Standards J1349, J1995.



# John Deere and Frontier Equipment: The Perfect Fit

*Stacking bales, moving pallets, cleaning pens, hauling brush... the 6R Series Tractors can get the job done. But to do the job right, you need the right attachments. That's where John Deere and Frontier Equipment can help.*

With a complete line of tools covering a wide array of jobs, Frontier Equipment is your first and last stop for front- or rear-mounted implements and attachments.

Stop by your John Deere dealer, or visit us online to find out more about our complete line of attachments from John Deere and Frontier Equipment, including:

<i>Box blades</i>	<i>Rotary tillers</i>
<i>Overseeders</i>	<i>Disks</i>
<i>Rotary rakes</i>	<i>Sickle mowers</i>
<i>Soil pulverizers</i>	<i>Posthole diggers</i>
<i>Manure spreaders</i>	<i>Wheel rakes</i>
<i>Disc mowers</i>	<i>Rear blades</i>
<i>Core aerators</i>	<i>Grooming mowers</i>
<i>Offset disks</i>	<i>Tedders</i>
<i>Wood chippers</i>	<i>Snowblowers</i>
<i>Bale huggers</i>	<i>Bale wrapper</i>
<i>Bale spears</i>	<i>Food plot seeders</i>
<i>Rotary cutters</i>	<i>Land planes</i>







1. Handle large round bales with a 6R Tractor and a Frontier Equipment Bale Carrier. *BC1108 Bale Carrier shown.*

2. Put a 6R Tractor in front of any of the Frontier Manure Spreaders, and you're making quick, easy work of even the dirtiest jobs.



3. Save money by grinding and mixing your own feed with a 6R Tractor and a Frontier Equipment Grinder Mixer. *GX1117 Grinder Mixer shown.*



4. Unload and load supplies with a selection of Frontier pallet forks.





## *Time tested, farmer approved*

Producers around the world trust us to help them succeed, making John Deere the premier name in agricultural equipment. They know they can trust and rely on our world-class products, service, and support.

When you invest in a John Deere, you get more than the latest tractor technology. You get the unmatched support of your John Deere dealer. Whether you need routine service and parts, in-field repair... or just some friendly advice, John Deere and your local dealer are committed to your success. Your success is our success... and it's been that way for more than 175 years.

## John Deere PowerGard™ Protection Plan

**All John Deere tractors come with a 24 total month/2,000 total hour factory basic limited warranty.\*\*** For greater control over the unexpected, it pays to check out our PowerGard+ Protection Plans. A broad range of plans are available to match your usage, trade cycles, and budget. See your dealer for pricing and details, or go online to [www.powergard.com](http://www.powergard.com) or [www.powergard.ca](http://www.powergard.ca).

\*\*Warranty coverage includes both parts and labor when your dealer installs the component on your machine, otherwise the coverage is for parts only. See your dealer or [www.deere.com](http://www.deere.com) for details. Hour and/or usage limitations apply and vary by model. Term limited to years or hours used, whichever comes first, and varies by model. See the LIMITED WARRANTY FOR NEW JOHN DEERE TURF AND UTILITY EQUIPMENT at [JohnDeere.ca/TUWarranty](http://JohnDeere.ca/TUWarranty) for details.

+PowerGard Protection Plan extended warranty covers failures due to defective materials or original workmanship of covered components. Customers have a choice between either the Limited (engine & powertrain) coverage form or the Comprehensive (full-machine) coverage form. See your dealer or [www.deere.ca](http://www.deere.ca) for details.





## Add More

*Performance, muscle, comfort, convenience and versatility.*

Tackle any job, anytime, anywhere with John Deere attachments on your 6 Family of tractors. Need access to important documents while you're out in the field? Get our Field Office™ and add more organization to your workday. Looking to add more protection to your tractor investment? Consider adding a hood guard, or new front fenders. Regardless of the task at hand, John Deere attachments fit every need and add more potential to what you can do.

Read on to discover the latest in John Deere attachments, and at the back of the brochure, take a look at the genuine John Deere parts that keep your tractor running strong. Then, visit your local John Deere dealer to find out how you can Add More value to your tractor.

*Not enough time in your day?*

 **Add more.**

*Optional LED lighting technology provides daytime color output for excellent field definition. Plus, LED bulbs have a significantly longer service life compared to hallogen bulbs, and reduce drain on the battery and alternator.*





# + Add more comfort, convenience, security, productivity ...

Set your tractor up just the way you want by adding quality John Deere attachments. Plus, when it comes time to trade or sell, your investment could be worth more. This is just a sampling of the attachments available for the 6R Series Tractors.

See your John Deere dealer for all your parts and attachments needs.



### Door locks

The door lock kit features a new handle and high-security dedicated cab door key that is different from the standard ignition key.



### Lockable fuel and DEF caps

Protect yourself against vandalism or theft. Caps are designed to fit on current and previous tractor models.



### Electrical cooling compartment

No matter how long you're in the field, this refrigerator – with a 5 liter capacity – will keep your food and drinks cool. There is an on-off switch, but the fridge runs only if the tractor is on.



### FieldOffice™

The FieldOffice provides a place for everything, all within your reach and it's removable so you can take valuable contents with you when you go.



### Accessory mounting bracket kit

The new mounting bracket kit allows the operator to mount, adjust and position key controls and displays within the cab for maximum accessibility without compromising visibility. Shown with Cell Phone Mount and Tablet Mount Kits.

### Rear wheel weights

Keep your tractor balanced for better stability and improved traction when using front loaders.

#### Part numbers and applications:

- L28228: Rear Wheel Weight 121 Lb. (55 Kg)
- R167153: Starter Weight, Wheel, 159 Lb. (72 Kg)
- R56920: Rear Wheel Weight, 110 Lb. (50 Kg)
- R207782: Rear Wheel Weight, 450lb. (204 Kg)







### Tool box

This lockable tool box with a convenient carrying handle holds tools and a selection of linkage balls, hitch and lynch pins for implement attachment

### Front fenders

Made from durable rubber, these fenders will outlast the harshest conditions to protect and keep your tractor clean. The John Deere logo adds the right amount of style. **Not compatible with tractors equipped with front loaders.**



### Beacon lights

Being visible to others on the road is important. John Deere beacon light kits bring on-road visibility to a whole new level. For your convenience, a cab-mounted rocker switch turns the light on and off.



### Tractor utility box

With loads of capacity, two removable shelves and innovative front door and lid design, this new tractor utility box breaks new ground for convenience, versatility and rugged design.

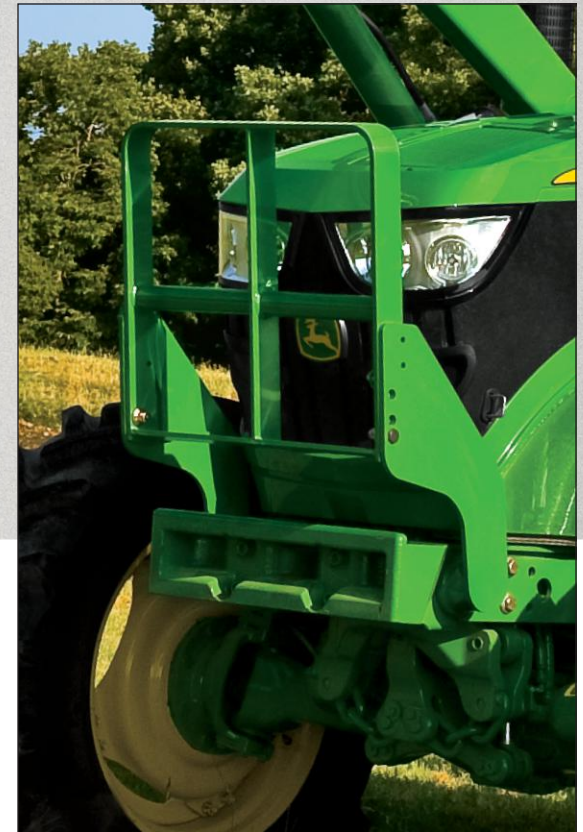


### Electric telescopic mirrors

Large external mirrors give better view of rear implements. Electric control allows easy in-cab adjustment, while electric heating element keeps mirror free of ice and snow.

### Hood guards

Protect your investment and your pocket book from potentially costly repairs by installing a John Deere hood guard. Built to withstand tough daily chores, the hood guard provides protection from tough conditions and potential operational mishaps.





You have a loyal sidekick. So should your operation.



As you face the demands of your day, it's good to have company you can count on. You can rely on us when you need financing for your operation. With John Deere Financial, you have a resource that gives you many options to choose from.

At the end of the day – and every day forward – we'll be there at your side.



U.S.A. [www.JohnDeereFinancial.com](http://www.JohnDeereFinancial.com) | Canada [www.JohnDeereFinancial.ca](http://www.JohnDeereFinancial.ca)



This literature has been compiled for worldwide circulation. While general information, pictures and descriptions are provided, some illustrations and text may include finance, credit, insurance, product options and accessories NOT AVAILABLE in all regions. PLEASE CONTACT YOUR LOCAL DEALER FOR DETAILS. John Deere reserves the right to change specification and design of all products described in this literature without notice. John Deere's green and yellow color scheme, the leaping deer symbol, and JOHN DEERE are trademarks of Deere & Company.

